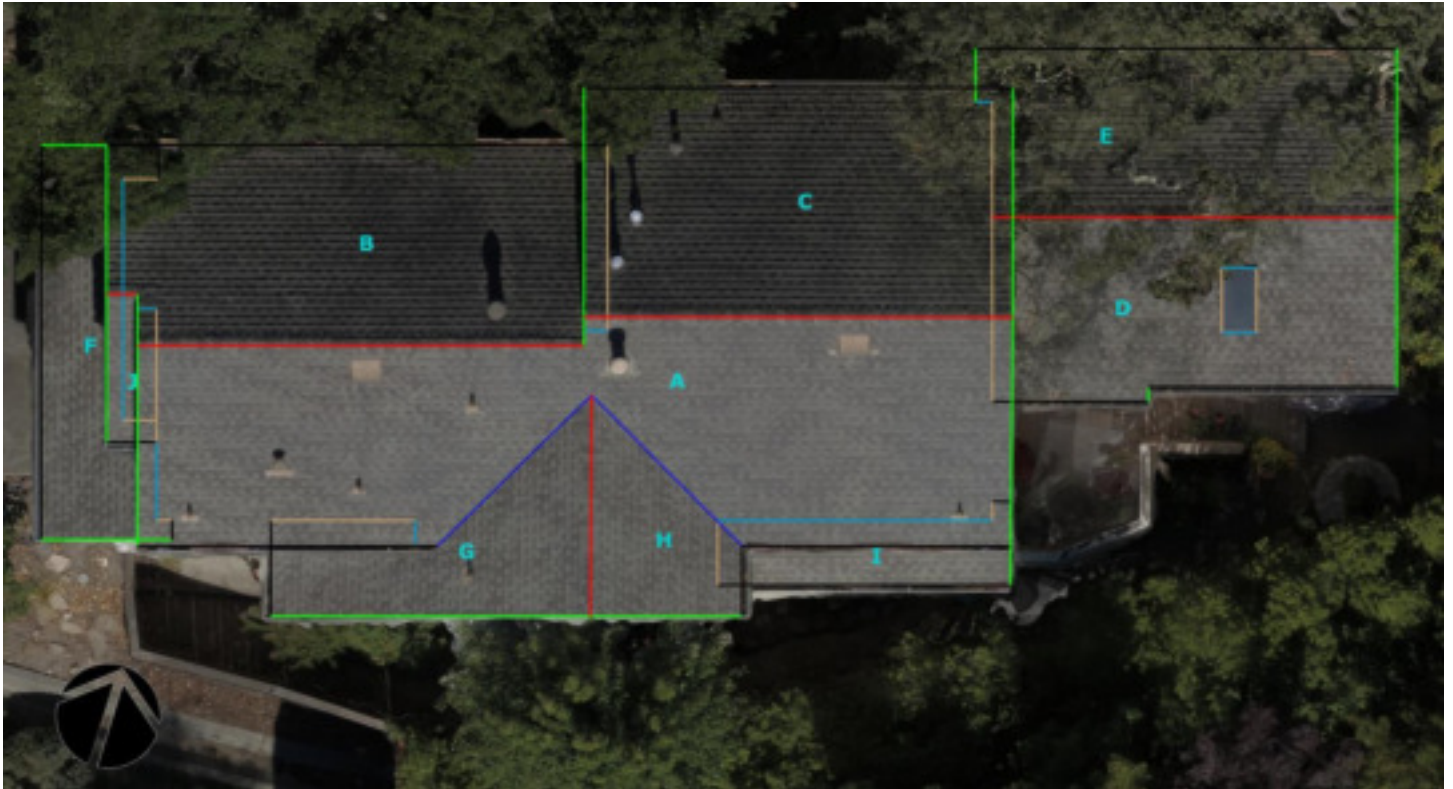




FLY. UPLOAD. ANALYZE. PRESENT.

## Precision Drone Captured Roof Estimation Data



3536 Kirkridge St, Santa Rosa, CA 95403

### Summary:

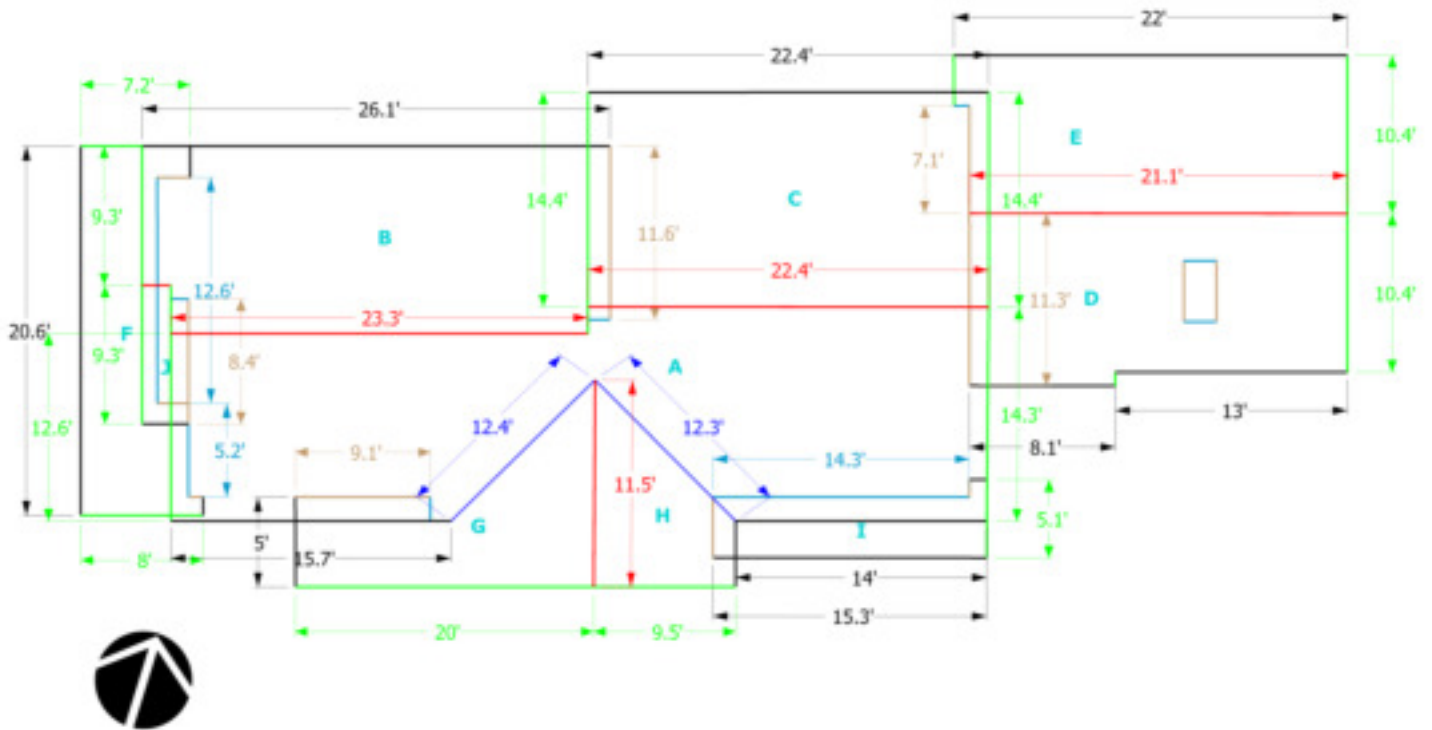
Capture date: October 1, 2019  
Total roof area: 2026 ft<sup>2</sup>  
Principle roof pitch: 8:12  
Facets mapped: 10

### NOTES:

Drone generated Roof Schematic by [ConnexiCore](#)  
Contact: [sales@connexicore.com](mailto:sales@connexicore.com)

3536 Kirkridge St, Santa Rosa, CA 95403

Captured October 1, 2019



ID	Area ft <sup>2</sup>	Pitch	ID	Area ft <sup>2</sup>	Pitch
A	539	8:12	F	121	7:12
B	322	8:12	G	123	8:12
C	322	8:12	H	72	8:12
D	220	7:12	I	62	7:12
E	222	7:12	J	23	8:12

Edge Type	Length
Step_Flashing	69
Flashing	40
Eave	172
Valley	25
Rakes	154
Ridge	80

### Building Overview-1

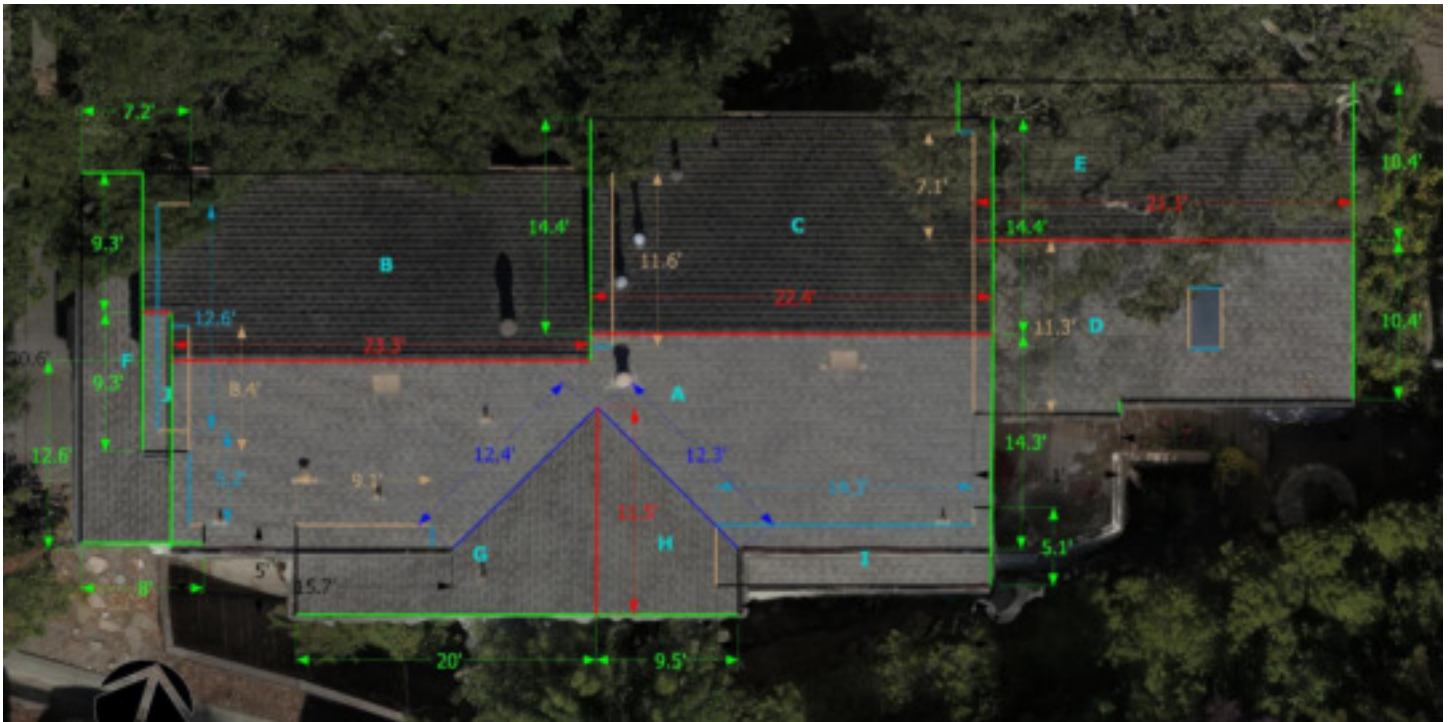
Total Area: 2026 ft<sup>2</sup>

Total Facets: 10

Total Edge Count: 63

3536 Kirkridge St, Santa Rosa, CA 95403

Captured October 1, 2019



**Building Overview-2**

Total Area: 2026 ft<sup>2</sup>

Total Facets: 10

Total Edge Count: 63

3536 Kirkridge St, Santa Rosa, CA 95403

Captured October 1, 2019



Front Elevation

3536 Kirkridge St, Santa Rosa, CA 95403

Captured October 1, 2019



Right Elevation



FLY. UPLOAD. ANALYZE. PRESENT.



Rear Elevation

3536 Kirkridge St, Santa Rosa, CA 95403

Captured October 1, 2019



Left Elevation